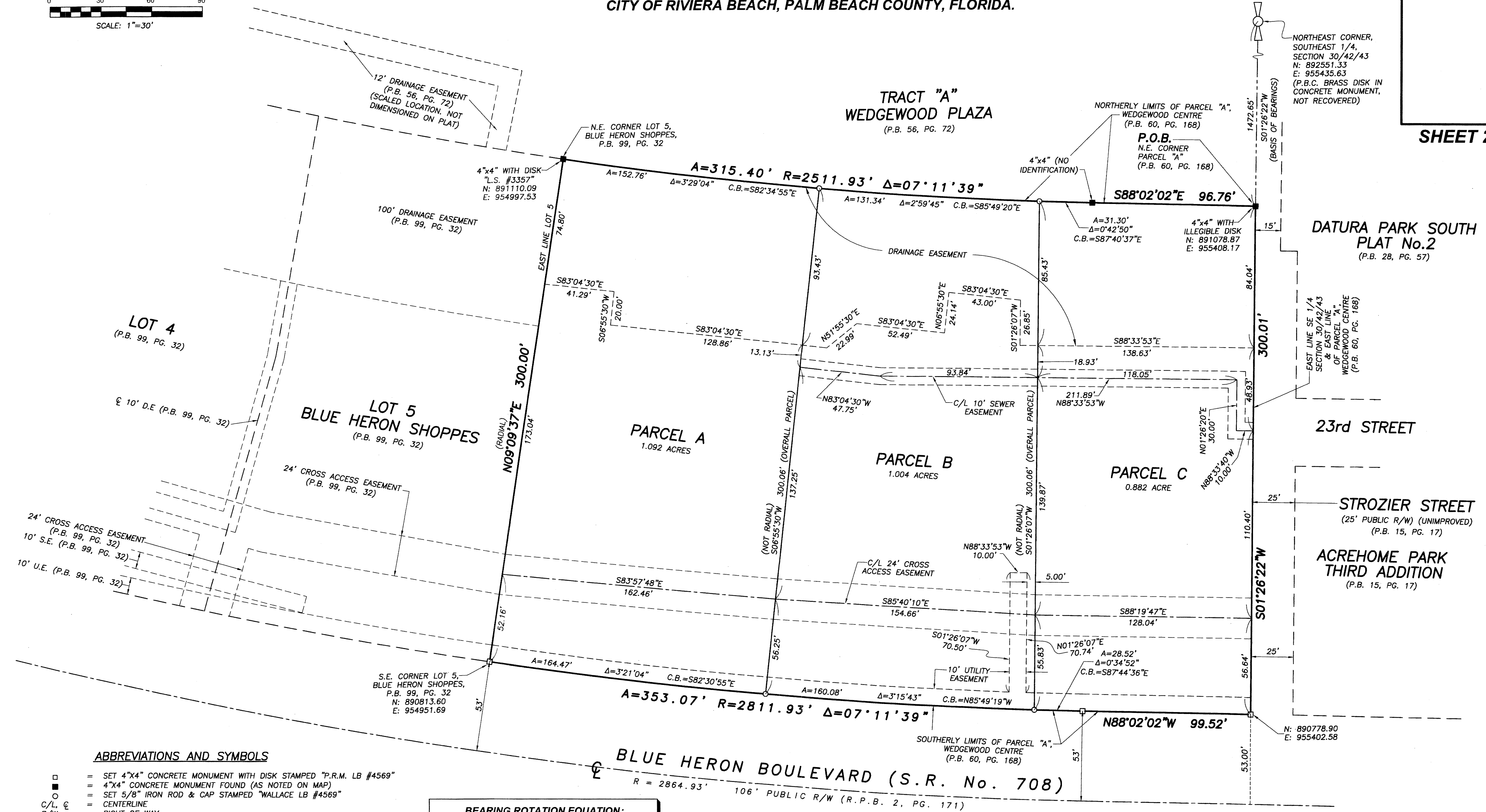
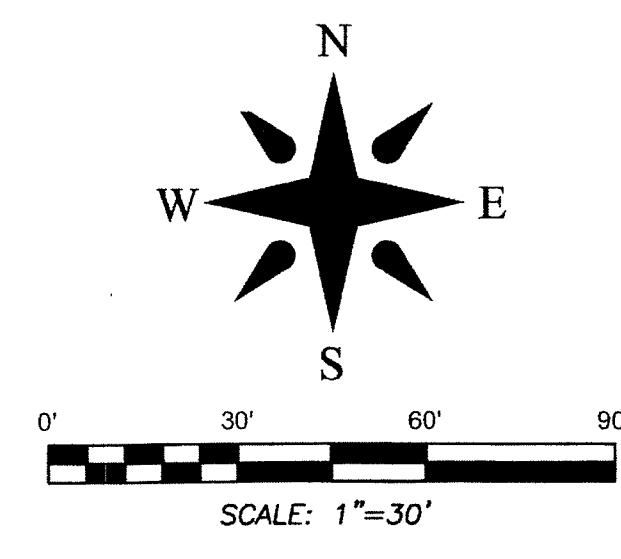


# WEDGEWOOD CENTRE REPLAT No. 1

BEING A REPLAT OF A PORTION OF PARCEL "A", WEDGEWOOD CENTRE, ACCORDING TO THE PLAT THEREOF, ON FILE IN THE OFFICE OF THE CLERK OF THE CIRCUIT COURT IN AND FOR PALM BEACH COUNTY, FLORIDA, RECORDED IN PLAT BOOK 60, PAGES 168-170, LYING IN SECTION 30, TOWNSHIP 42 SOUTH, RANGE 43 EAST, CITY OF RIVIERA BEACH, PALM BEACH COUNTY, FLORIDA.

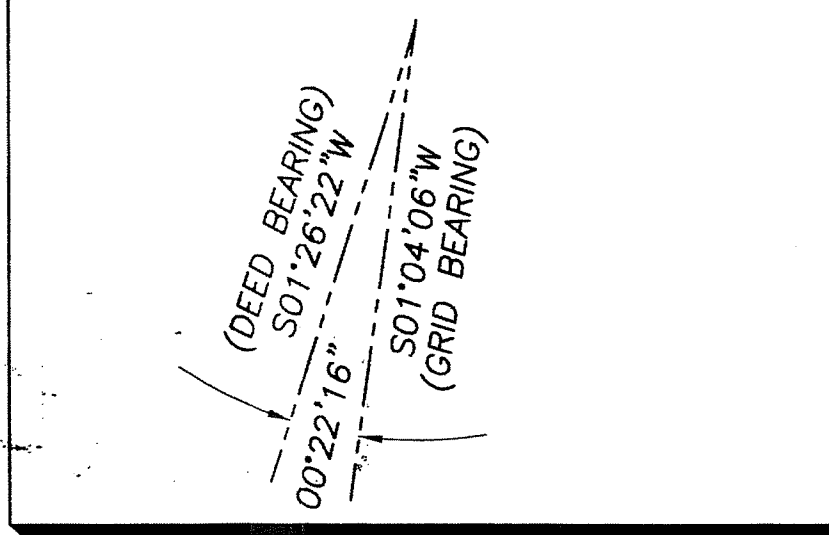


### ABBREVIATIONS AND SYMBOLS

- = SET 4"x4" CONCRETE MONUMENT WITH DISK STAMPED "P.R.M. LB #4569"
- = 4"x4" CONCRETE MONUMENT FOUND (AS NOTED ON MAP)
- = SET 5/8" IRON ROD & CAP STAMPED "WALLACE LB #4569"
- C/L, ⊕ = CENTERLINE
- R/W = RIGHT OF WAY
- P.B. = PLAT BOOK
- PG(S) = PAGES
- SEC. = SECTION
- TWP. = TOWNSHIP
- RGE. = RANGE
- U.E. = UTILITY EASEMENT
- D.E. = DRAINAGE EASEMENT
- D.B. = DEED BOOK
- A = ARC LENGTH
- Δ = CENTRAL ANGLE
- R = RADIUS
- C.B. = CHORD BEARING
- O.R.B. = OFFICIAL RECORDS BOOK
- R.P.B. = ROAD PLAT BOOK
- L.A.E. = LIMITED ACCESS EASEMENT
- P.O.B. = POINT OF BEGINNING
- P.O.C. = POINT OF COMMENCEMENT
- P.B.C. = PALM BEACH COUNTY
- N. = NORTHING
- E. = EASTING
- N.R. = NON RADIAL
- S.R. = STATE ROAD

### BEARING ROTATION EQUATION:

00°22'16" COUNTER CLOCKWISE ROTATION (DEED TO GRID) ALONG THE EAST LINE OF THE SE 1/4, SECTION 30/42/43



### NOTES:

1. BEARINGS SHOWN HEREON ARE BASED ON THE EAST LINE OF THE SOUTHEAST QUARTER OF SECTION 30, TOWNSHIP 42 SOUTH, RANGE 43 EAST (SAID EAST LINE ALSO BEING THE EAST LINE OF PARCEL "A", WEDGEWOOD CENTRE, RECORDED IN PLAT BOOK 60, PAGE 168), WHICH BEARS SOUTH 01°26'22" WEST AND ALL OTHER BEARINGS ARE RELATIVE THERETO.
2. COORDINATES SHOWN HEREON ARE GRID AND ARE REFERENCED TO THE TRANSVERSE MERCATOR PROJECTION OF THE FLORIDA EAST ZONE, NAD 83 AS ADJUSTED IN 1990.
3. ALL DISTANCES ARE GROUND.
4. SCALE FACTOR = 1.000046027
5. GROUND DISTANCE X SCALE FACTOR = GRID DISTANCE

**WALLACE SURVEYING**  
CORP. LICENSED BUSINESS #1699  
5533 VILLAGE BOULEVARD, WEST PALM BEACH, FLORIDA 33407 (561) 840-4551

FIELD:	JOB No.: 14-1002	F.B. PG.
OFFICE: R.C.	DATE: JULY 2014	DWG. No.: 14-1002-1
C'K'D:	REF.: 14-1002-1.DWG	SHEET 2 OF 2